

**Ligia (AKA Claudia) Collado-Vides, Department of Biological Sciences
Senior Lecturer-Reseracher at Florida International Unviresity
Marine Macroalgae Research Laboratory
Biological Sciences, OE 167, SERC, OE 148
11200 SW 8th Street, Miami, FL 33199
Email: colladol@fiu.edu
Phone: +305-348-2274
Web site: marinemacroalgae.fiu.edu**

EDUCATION

Degree	Institution	Field	Date
PhD	Universidad Nacional Autónoma de México	Biological Sciences	1992
MS	Universidad Nacional Autónoma de México	Biological Oceanography	1989
BS	Universidad Autónoma Metropolitana, Mexico	Biology-Ecology	1983

FULL-TIME ACADEMIC EXPERIENCE

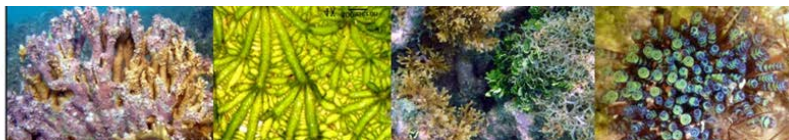
Institution	Rank	Field	Dates (Month & Year)
FIU	Senior Lecturer Researcher	Biology/Marine Biology	May 2014- to date
FIU	Lecturer Researcher	Biology/Marine Biology	August 2008- to date
FIU	Visiting Lecturer	Biology/Marine Biology	December 2007-May 2008
FIU	Visiting Research Associate	Biology/Marine Biology	February 2007- December 2007
Universidad Nacional de México. Science Faculty	Tenured Associated Professor	Biology/Marine Biology	July 1998-July 2006
Universidad Nacional de México. Science Faculty	Assistant Professor	Biology/Marine Biology	January 1993- July 1998
Universidad Nacional de México. Science Faculty	Research Assistant	Biology/Marine Biology	July 1988- Dec 1993

TEACHING AWARDS AND RECOGNITIONS

HHMI faculty scholar award for the Fall 2013 and Spring 2014 semesters.

This award has specific pedagogic goals. A full transformation of the course OCB 3264, Coral Reef Biology, will be conducted.

Dissertation Advisor Status (DAS), in January 2013, based on my CV and Faculty support from the Department I was appointed DAS, which allow me to chair dissertation committees.



2012 Global Learning Faculty Fellowship. This award has the goal to link undergraduate research with undergraduate teaching under a global learning context. The award was in the Global Human Impacts on Coastal Waters category. Title: A Perspective from a Local Seagrass Community in a Caribbean Nutrient Enriched Coral Reef Lagoon, awardee: Dr. Ligia Collado-Vides, Dept. of Biology. Two undergraduate students traveled to Mexico during a summer to conduct research in marine botany. Their experience has been used to bring comparative data between the Mexican Caribbean and South Florida in the Marine Botany course BOT 4402C and BOT 5186C.

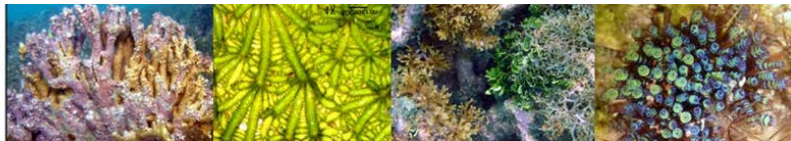
Member to the Golden Key International Honor Society since October 2011. This membership is given to Faculty based on commitment to higher education and outstanding job performance in her capacity as Lecturer-Researcher of Biological Sciences.

PUBLICATIONS

Disciplinary publications:

Peer-Review

33. **Collado-Vides, L.**, Cassano, V., Díaz-Larrea, J., Duran, A., Medeiros, A., Senties, A., and Fujii, M.T. (submitted) The spread of the introduced species *Laurencia caduciramulosa* (Rhodomelaceae, Rhodophyta) to the northwest Atlantic: A morphological and phylogenetic analysis. **Phytotaxa**
32. Lacey E., **Collado-Vides, L.** Fourqurean J. W. (2014) Morphological and physiological responses of seagrasses to grazers and the role of these responses as grazing patch abandonment cues. **Tropical Biology.**
31. Vera, B., **Collado-Vides, L.** Moreno C., and van Tussenbroek B. I. (in press) *Halophila stipulacea* (Hydrocharitaceae): A recent introduction to the continental waters of Venezuela. **Caribbean Journal of Sciences.**
30. Lirman, D., Thyberg, T., Santos, R., Schopmeyer, S., Drury, C., **Collado-Vides, L.**, Bellmund, S. and Serafy, J. 2014 . SAV Communities of Western Biscayne Bay, Miami, Florida, USA: Human and Natural Drivers of Seagrass and Macroalgae Abundance and Distribution Along a Continuous shoreline. **Estuaries and Coasts** DOI 10.1007/s12237-014-9769-6
29. Troxler, T.G., E. Gaiser, J. Barr, J.D. Fuentes, R. Jaffé, D.L. Childers, **L. Collado-Vides**, V.H. Rivera-Monroy, E. Castañeda-Moya, W. Anderson, R. Chambers, M. Chen, C. Coronado-Molina, S.E. Davis, V. Engel, C. Fitz, J. Fourqurean, T. Frankovich, J. Kominoski, C. Madden, S.L. Malone, S.F. Oberbauer, P. Olivas, J. Richards, C. Saunders, J. Schedlbauer, L.J. Scinto, F. Sklar, T. Smith, J.M. Smoak, G. Starr, R.R. Twilley, and K. Whelan. 2013. Integrated carbon budget models for the Everglades terrestrial-coastal-oceanic gradient: Current status and needs for inter-site comparisons. **Oceanography** 26(3):98–107, <http://dx.doi.org/10.5670/oceanog.2013.51>.
28. **Collado-Vides, L.**, Avila, C., Blair, S., Leliaert, F., Rodriguez, D., Thyberg, T., Schneider, S.



Rojas, J., Sweeney, P., Drury. C., Lirman, D. 2013. A persistent bloom of *Anadyomene* Lamouroux species (Anadyomenaceae, Chlorophyta) in Biscayne Bay, Florida. **Aquatic Botany**. **111: 95-103**
<http://dx.doi.org/10.1016/j.aquabot.2013.06.010>

27. Ladd, M. and **Collado-Vides, L.** 2013. Practical applications of monitoring results to improve managing for coral reef resilience: a case study in the Mexican Caribbean. **Biodiversity and Conservation**. 22 (8): 1591-1608. DOI 10.1007/s10531-013-0493-5.

26. Lacey E., Fourqurean J., and **Collado-Vides L.** 2013. Continued coral decline despite presence of *Diadema antillarum* populations on an impacted Caribbean coral reef. **Bulletin of Marine Science**. 89(2):603–620.

25. **Collado-Vides, L.**, Mazzei, V., Thyberg, T., & Lirman, D., 2011. Spatiotemporal patterns of macroalgal diversity and abundance at a heavily managed estuary, Biscayne Bay, Florida, USA. **Botanica Marina** 54:377-390.

24. Yñiguez, A.T., McManus, J.W., **Collado-Vides, L.** 2010. Capturing the dynamics in benthic structures: environmental effects on morphology in the macroalgal genera *Halimeda* and *Dictyota*. **Marine Ecology Progress Series**. 411:17-32.

23. **Collado-Vides L.**, Suárez, A., and Cabrera, R. 2009. Una revisión taxonómica del género *Udotea* en el Caribe Mexicano y Cubano. **Revista de Investigaciones Marinas** 30: 145-161.

22. **Collado-Vides, L.**, Caccia, V., Boyer, J.N. and Fourqurean, J.W. 2007. Spatiotemporal distribution of macroalgal groups in relation to water quality in the Florida Keys National Marine Sanctuary. **Estuarine, Coastal and Shelf Sciences**. 73: 680-694.

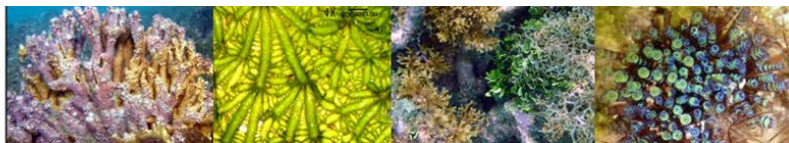
21. Ruesink J.L. and **Collado-Vides L.** 2006. Modeling the increase and control of *Caulerpa taxifolia* (Chlorophyta), an invasive marine macroalga. **Biological Invasions** 8(2): 309-325.

20. **Collado-Vides, L.**, Rutten, L.M. and Fourqurean, J. W. 2005. Spatiotemporal variation of the abundance of calcareous green macroalgae in the Florida Keys: A study of synchrony within a macroalgal functional-form group. **Journal Phycology**. 41:742-752.

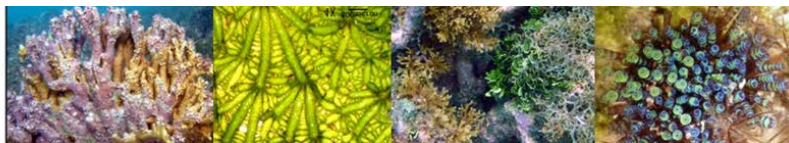
19. Carmona, J., Beltrán, M. Y. and **Collado-Vides, L.** 2004. Taxonomy and distribution of freshwater *Blennothrix* (Oscillatoriaceae, Cyanophyceae) from central Mexico. **Nova Hedwigia**.80:323-333.

18. **Collado-Vides L.** 2002. Morphological plasticity of *Caulerpa prolifera* (Caulerpales-Chlorophyta) in relation to growth form in a coral reef lagoon. **Botanica Marina**, 45:123-129.

17. **Collado-Vides L.** 2001. Clonal architecture in marine macroalgae: Ecological and evolutionary perspectives. **Evolutionary Ecology** 15:531-545.



16. Tussenbroek, B. I. Van and **Collado Vides L.** 2000. Filamentous Algae Dominate a Tropical Reef Community in the Mexican Caribbean: an Unexpected Organization of Reef Vegetation **Botanica Marina** 43: 547-557.
15. De Lara-Isassi G., Álvarez-Hernández, S. and **Collado-Vides L.** 2000. Ichtyo-toxic activity of extracts from Mexican marine seaweeds. **J. Applied Phycology** 12: 1-8.
14. **Collado-Vides L.** and Robledo D. 1999. Morphology and photosynthesis of *Caulerpa* (Chlorophyta) in relation to their growth form. **Journal of Phycology** 35: 325-330.
13. **Collado-Vides L.**, DeWreede, R.E. and Milligan K.L.D. 1998. Biomechanical properties of *Udotea* (Halimedales, Chlorophyta) in a Mexican reef lagoon. **Phycologia** 37: 443-449.
12. **Collado-Vides L.**, Ortegón-Aznar, I., Comba, L., Senties A., and González-González J. 1998. Macroalgae of Puerto Morelos reef, Mexican Caribbean. **Hidrobiologia** 8: 133-143.
11. **Collado-Vides L.** 1997. Consecuencias ecológicas y evolutivas de la arquitectura modular en plantas: Persepctivas en algas marinas. **Revista Chilena de Historia Natural** 70: 23-39.
10. **Collado-Vides L.**, Gómez, G. Gómez V. and Lechuga, G. 1997. Simulation of the clonal growth of *Bostrychia radicans* (Ceramilales Rhodophyta) using L-Systems. **BioSystems** 42: 19-27.
9. Trelles, J. Suárez A.M. y **Collado-Vides L.** 1997. Macroalgae from the reef of La Herradura, northwestern coast of La Habana. **Revista de Investigaciones Marinas**. 18: 191-192.
8. Suárez A.M., **Collado-Vides L.** , and González-González, J. 1996. Estudio comparativo de la ficoflora del Caribe de Mexico y Cuba. **Revista de Investigaciones Marinas** 17: 9-16.
7. **Collado-Vides, L.** and West J.A. 1996. *Bostrychia calliptera* (Montagne) Montagne (Rhodomelaceae, Rhodophyta), registro nuevo para el centro del Golfo de Mexico. **Ciencias Marinas** 22: 47-55.
6. Rodríguez, V. D. and **Collado-Vides L.** 1996. Architectural models for apical growth patterns in *Gelidium L.* (Gelidiales, Rhodophyta). **Phycological Research** 44: 95-100.
5. Fujii, T. M., **Collado-Vides L.** and Cordeiro-Marino M. 1996. Morphological studies on *Laurencia gemmifera* Harvey and *Laurencia poiteaui* (Lamouroux) Howe from the Nichupte Lagoon System, Quintana Roo, México. **Botanica Marina** 39: 317-326.
4. **Collado-Vides L.**, González-González J. and Ezcurra E. 1995. Patrones de distribución ficoflorística del sistema lagunar de Nichupté, Quintana Roo, México. **Acta Botánica Mexicana** 31: 19-32.
3. **Collado-Vides L.**, González-González, J. and Gold Morgan, M. 1994. A descriptive approach to the "Floating masses" of algae of a Mexican Caribbean coastal lagoon. **Botanica Marina** 37: 371-376.



2. Serviere-Zaragoza E., **Collado-Vides L.** and González-González J. 1992. Caracterización ficológica de la Laguna de Bojórquez, Quintana Roo, México. **Caribbean Journal of Sciences** 28: 126-136.

1. **Collado-Vides L.**, Segura, L. and Merino M. 1988. Algunas observaciones sobre dos escifomedusas del género *cassiopea* durante un ciclo anual. **Revista de Investigaciones Marinas** 9: 21-27.

Proceedings

1. Piñón-Gimate A. and **Collado-Vides, L.** 2009. Macroalgal distribution in a Mexican Caribbean Reef. **Proceedings of the 11th International Coral Reef Symposium.** 678-682.

Non-Peer-Review

3. Squires, M., E. Alvear, A. Atkinson, A. Bourque, **L. Collado-Vides**, B. Cook, K. Cook, C. Covell, D. DiResta, T. Frankovich, S. Kingston, D. Kjar, S. Koi, E. Lacey, J. Lavan, K. Marks, S. Martin, D. McCarthy, V. McDonough, C. Messing, M. Meldonian, S. Meldonian, W. Miller, J. Monty, G. Paulay, T. Pernas, J. Pulfer, B. Ruttenberg, J. Sadle, R. Seavey, B. Shamblin, A. Wachnicka, L. Wingard, T. Ziegler. 2013. National Geographic Society-National Park Service BioBlitz in Biscayne National Park: Summary of Results. Natural Resource Report NPS/SFCN/NRR—2013/XXX. National Park Service, Fort Collins, Colorado.

2. Carmona, J., Alcaraz, G., Bojorge, M.G. and **Collado-Vides, L.** 2012. El gran desafío de los seres vivos en ecosistemas fluviales. *Ciencias* 107-108: 67-75

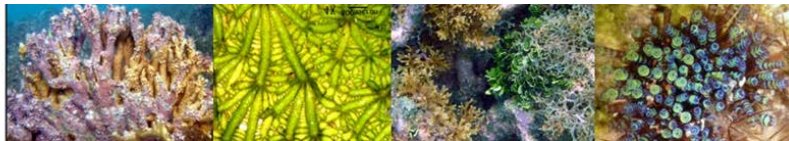
1. **Collado-Vides L.** and Braga M. R.A. 1996. Discusión y perspectivas sobre la morfología en el estudio de las algas marinas. **Revista Ciencias** 42: 20-25

Chapters in books

5. Bouchon, C., C. Portillo, Y. Bouchon-Navaro, M. Louis, P. Hoetjes, K. De Meyer, D. Macrae, H. Armstrong, V. Datadin, S. Harding, J. Mallela, R. Parkinson, J. Van Bochove, S. Wynne, D. Lirman, J. Herlan, A. Baker, **L. Collado-Vides**; S. Nimrod, J. Mitchell, C. Morrall, C. Isaac. 2008. Status of Coral Reefs of the Lesser Antilles: The French West Indies, The Netherlands Antilles, Anguilla, Antigua, Grenada, Trinidad and Tobago. In: Wilkinson, C. (ed.) **Status of Coral Reefs of the World: 2008.** Australian Institute of Marine Science, Townsville, 304pp.

4. **Collado-Vides L.** and Ruesink J. 2002. Morphological plasticity and invasive potential of some *Caulerpa* species. In: Grosholz E. (Ed.) **International Caulerpa Conference.** Sea Grant, San Diego California.

3. **Collado-Vides L.** 2001. Clonal architecture in seaweeds: Simulation and ecological interpretation of



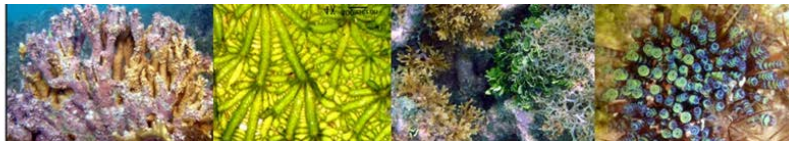
the clonal growth of *Bostrychia radicans* (Ceramiales-Rhodophyta) using L-Systems. En Kaandorp J. y J. Kubler (Eds.) **The algorithmic beauty of seaweeds, sponges and corals**. Elseviere.

2. Collado-Vides L. 2000. A review of algae associated with Mexican mangrove forests. Pp 353-365. En: Munawar, M., S.G. Lawrence, I.F. Munawar & D.F. Malley (eds.) **Aquatic ecosystems of Mexico**. Ecovision World Monograph Series. Backhuys Publishers, Leiden The Netherlands

1. Collado-Vides L. and González-González J. 1993. Macroalgas del Sistema Lagunar de Nichupté Quintana Roo. En: Salazar-Vallejo, S. y N. González (eds.), "**Biodiversidad Marina y Costera de México**" México CONABIO, CIQRO. 752-760 pp.

Government reports:

- 8. Collado-Vides, L.,** Blair, S., Avila, C., Anderson, B. and Lirman, D. 2013. An evaluation of the expansion of the *Anadyomene* complex bloom in Biscayne Bay. A study of their nutrient and stable isotope content, III. Report presented to Biscayne Bay Aquatic Preserves. June 2013. 25 pp.
- 7. Collado-Vides, L.,** Blair, S., Avila, C., Thyberg, T., Anderson, B. and Lirman, D. 2012. An evaluation of the expansion of the *Anadyomene* complex bloom in Biscayne Bay. A study of their nutrient and stable isotope content. Report presented to Biscayne Bay Aquatic Preserves. June 2012. 29 pp.
- 6. Lirman, D.** and J. E. Serafy; Collaborators: T. Thyberg, **L. Collado-Vides**, S. Bellmund, R. Santos, B. Huntington, J. Herlan, G. Deangelo 2011. *Biscayne Bay Nearshore Submerged Aquatic Vegetation*. CERP Monitoring and Assessment Plan Component Activity Number 3.2.3.3. Third Annual Report.
- 5. Collado-Vides L.,** S. Blair, C. Avila, D. Lirman, T. Thyberg, S. Schneider and C. Drury. 2011. An evaluation of the expansion of the *Anadyomene* complex bloom in Biscayne Bay. A study of their nutrient and stable isotope content. Biscayne Bay Aquatic Preserve Report. 26 pp.
- 4. Collado-Vides L.,** S. Blair, C. Avila, D. Lirman, T. Thyberg, S. Schneider, Janina Rojas and C. Drury. 2011. Macroalgae as indicators of nutrient conditions in Biscayne Bay: A study of nutrient and stable isotope content on the green macroalgae complex *Anadyomene stellata* – *A. sp.* Biscayne Bay Aquatic Preserve Report. 29 pp.
- 3. Lirman, D.** and J. E. Serafy; Collaborators: T. Thyberg, **L. Collado-Vides**, V. Mazzei, S. Bellmund, R. Santos, B. Huntington, J. Herlan, G. Deangelo 2010. *Documenting Everglades Restoration Impacts on Biscayne Bay's Shallowest Benthic Habitats*. CERP Monitoring and Assessment Plan Component Activity Number 3.2.3.3. Third Annual Report.
- 2. Lirman, D.** and J. E. Serafy; Collaborators: T. Thyberg, **L. Collado-Vides**, V. Mazzei,



S. Bellmund, R. Santos, B. Huntington, J. Herlan, G. Deangelo 2009. *Documenting Everglades Restoration Impacts on Biscayne Bay's Shallowest Benthic Habitats*. CERP Monitoring and Assessment Plan Component Activity Number 3.2.3.3. Second Annual Report.

1. Tussenbroek B.I. van and **Collado-Vides, L.** 1998. Análisis de la comunidad de macroalgas en la laguna del parque Chankanaab. Informe final del subproyecto sobre macroalgas del proyecto multidisciplinario "Ecología y manejo del ambiente marino del Parque Chankanaab. Financiado por: Fundación Parques y Museos de Cozumel A.C.

Book Reviews:

Collado-Vides Ligia. 2008. The seaweeds of Florida. **Bulletin of Marine Sciences** 83(2):433-434.

PRESENTED PAPERS, AND LECTURES

A Persistent Bloom of *Anadyomene Lamouroux* Species (Anadyomenaceae, Chlorophyta) in Biscayne Bay, Florida

Managing for Resilience: A New Paradigm for Managing Marine Protected Areas in the Caribbean. 5th LACC Affiliated Faculty Colloquium. Florida International University. March 2012.

Macroalgal assemblages as indicators of salinity and nutrient status of nearshore habitats in Biscayne Bay Florida. Conference at the Southeast Research Center Brown Bag Seminar, Florida International University. February 2012.

Marine conservation: An educational perspective. Conference at the Mesoamerican Reef System. Belize. January 2006.

Monitoring Seagrass and macroalgae in the Florida Keys. Conference at the Mesoamerican Reef System, Belize. January 2006

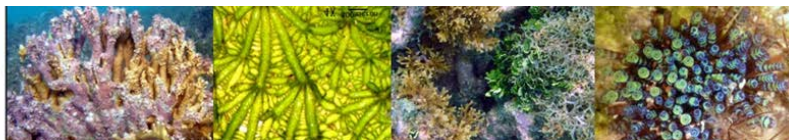
Architecture of macroalgae, population biology and back t architecture. Conference at the Department of Biology, Florida Internacional University. February 2005.

Marine Protected Areas: an educational perspective. Conference at the Department of Biology, Plant Talk series, Department of Biology, Florida International University. Miami, USA. 2005

Marine Protected Areas in the Mexican Caribbean. Conference at the Environmental Studies Department at Florida International University, Miami, USA. 2004

Spatial modeling in macroalga: An architectural perspective. Conference at Rosenstiel School of Marine and Atmospheric Science, at NCORE University of Miami, USA. 2003

Clonal architecture in marine macroalgae: An important attribute in the invasive behavior of *Caulerpa taxifolia*. Conference at the Department of Zoology, Universidad de Washington, Seattle,



Washington, USA 2002.

Are all *Caulerpa* potential invasive species? Invited Conference at International *Caulerpa* Conference. San Diego, California, USA. 2002.

Arquitectura en algas marinas. Conference for Facultad de Ciencias (Ciclo propedéutico) Protistas y algas. Universidad Nacional Autónoma de México. 2000.

Modular architecture in the genus *Caulerpa*. Conference for the Instituto de Ciencias del Mar y Limnología (Estación Puerto Morelos). 1997.

Simulation of the growth of *Bostrychia radicans*. Conference for the IV Journey of teaching geometry. Facultad de Ciencias. Universidad Nacional Autónoma de México. 1994.

Mangroves: tropical ecosystems of transition. Conference for the Universidad de la Laguna, Tenerife, Islas Canarias, España. 1994.

Modeling in biology. Conference for the Seminar of Biomathematics, Department of Mathematics. Facultad de Ciencias. Universidad Nacional Autónoma de México. 1993.

Architecture in algae Conference for the Instituto de Ciencias del Mar y Limnología of Universidad Nacional Autónoma de México. 1992.

Phycofloristic analysis of a coastal lagoon of the mexican Caribbean. Conference for the Department of Botany, Universidad de Sao Paulo, Brasil. 1992.

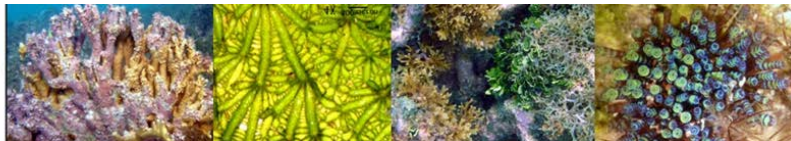
What are the algae? First workshop for professors of Biology, Universidad de San Carlos de Guatemala. 1989.

Field work in phycology Conference for Science Faculty. Universidad Nacional Autónoma de México. 1987.

SCIENTIFIC MEETINGS PARTICIPATIONS

Gonzalez' D., C. Tortora, A. Perez and, **L. Collado Vides**. A Comparative Analysis of Calcium Carbonate Production by Species of the Genera *Halimeda* and *Penicillus* along a Salinity Gradient in Florida Bay. ASM-LTER, Miami, FL. March 2014.

Collado-Vides, L., The role of research programs in bringing environmental awareness, participation and engagement to a multilevel student group: A transformational experience from the lab, to the field, to the classroom. 22nd Biennial Conference of the Coastal and Estuarine Research Federation (CERF), San Diego, California, November 2013.



Collado-Vides, L., Blair, S., Avila, C., Leliaert, F., Rodriguez, D., Sweeney, P., and Lirman, D. 2013. A new green macroalgae blooming in a tropical estuary: Are macroalgae the mine-canaries of Biscayne Bay nutrient status? 22nd Biennial Conference of the Coastal and Estuarine Research Federation (CERF), San Diego, California, November 2013.

Collado-Vides, L., The role of research programs in bringing environmental awareness, participation and engagement to a multilevel student group: A transformational experience from the lab, to the field, to the classroom. 22nd Biennial Conference of the Coastal and Estuarine Research Federation (CERF), San Diego, California, November 2013.

Collado-Vides, L., Avila, C., Blair, S., Leliaert, F., Rodriguez, D., Schneider, S., Sweeney, P., and Lirman, D. 2013. A persistent bloom of *Anadyomene Lamouroux* species (Anadyomenaceae, Chlorophyta) in Biscayne Bay, Florida. Harmful Algal Blooms, Sarasota, FL, October 2013.

Lopez, V. Izaguirre I, Lopez, A. and **Collado-Vides, L.** Nutrient availability supports a spatially restricted green macroalgal bloom in Biscayne Bay Florida. 35th Annual Southeastern Phycological Colloquy. Jacksonville, Mobile, Alabama, September 2013.

Duran A. Burkepile, D. and Collado-Vides, L. 35th Annual Southeastern Phycological Colloquy. Jacksonville, Mobile, Alabama, September 2013.

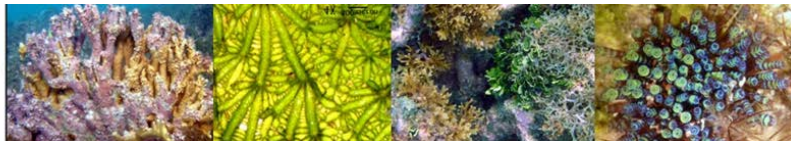
Cassano, V., M. Machín-Sánchez, A. I. Neto, M. C. Oliveira, A. Senties, J. Díaz-Larrea, M. Gil-Rodríguez, **L. Collado-Vides,** A. Medeiros and M. T. Fujii. 2013. A DNA Barcode Approach of the *Laurencia* Complex (Ceramiales, Rhodophyta) in the Tropical and Subtropical Atlantic Ocean. Abstract 43. International Phycological Congress, Orlando, FL, August 2013.

Collado-Vides, L. S. Blair, C. Avila, F. Leliaert, D. Rodriguez and D. Lirman. 2013. A Persistent Bloom of *Anadyomene J.V. Lamouroux* (Anadyomenaceae, Chlorophyta) in Biscayne Bay, Florida Abstract 51 International Phycological Congress, Orlando, FL, August 2013.

Fujii, M. T., A. J. Capote, A. Senties, J. Díaz-Larrea, V. Cassano, **L. Collado-Vides** and A. Areces. 2013. Morphological and Molecular Evidences Suggest a New Combination for *Laurencia coelenterata* (Ceramiales, Rhodophyta) from the Tropical Atlantic Ocean. Abstract 87 International Phycological Congress, Orlando, FL, August 2013.

Duran, A., Collado-Vides, L., and Burkepile, D. 2013. Recruitment and post-settlement of coral reef macroalgae and their ecological drivers. 36th Conference of the Association of Marine Laboratories of the Caribbean. Jamaica, June 2013.

Collado-Vides, L., Perez, A. and Fourqurean, J. 2013. *Halimeda* dynamics relative to nutrients availability in the Florida Keys and Florida bay: a good indicator of c production. 36th Conference of the Association of Marine Laboratories of the Caribbean. Jamaica, June 2013.



Dou, N. Berry, J and **Collado-Vides L.** 2013. Evaluation of bioactivity from of *Anadyomene linkiana* secondary metabolites a bloom forming green macroalgae in Biscayne Bay, Florida. 36th Conference of the Association Association of Marine Laboratories of the Caribbean. Jamaica, June 2013.

Perez, A. Puig-Santana, G., Fourqurean, J., and **Collado-Vides, L.** 2013. Evaluating Temporal Dynamics of Carbon Production for the Genus *Halimeda* in a Karstic System. **2nd best oral** LSSF STEM March 2013.

Rojas, J., Dorcius, D., Duran. A. 2013. Defensive behavior of *Stegastes partitus* and effects on coral reef fishes. Supervised by Burkepile D. and **Collado-Vides, L.** LSSF STEM March 2013.

Santiesteban, C., Largaespada, B., Tussenbroek B., **Collado-Vides, L.** 2013. Responses of *Avrainvillea nigricans* and *Thalassia testudinum* to Nutrient Availability. LSSF STEM March 2013.

Perez, A. Puig-Santana, G., Fourqurean, J., and **Collado-Vides, L.** 2013. Evaluating Temporal Dynamics of Carbon Production for the Genus *Halimeda* in a Karstic System. LTER-ASM March 2013.

Perez, A. Puig-Santana, G., Fourqurean, J., and **Collado-Vides, L.** 2013. Evaluating Temporal Dynamics of Carbon Production for the Genus *Halimeda* in a Karstic System. 42 Benthic Ecology Meeting. Savannah, Georgia March 2013.

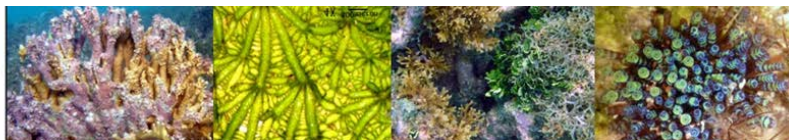
Duran, A., Collado-Vides, L., and Burkepile, D. 2013. Recruitment and post-settlement of coral reef macroalgae and their ecological drivers. 42 Benthic Ecology Meeting. Savannah, Georgia, March 2013.

Ladd, M. and Collado-Vides, L. 2013. Practical applications of monitoring results to manage for coral reef resilience: A case study in the Mexican Caribbean. 42 Benthic Ecology Meeting. Savannah, Georgia March 2013.

Perez, A. Puig-Santana, G., Fourqurean, J., and **Collado-Vides, L.** 2013. Evaluating Temporal Dynamics of Carbon Production for the Genus *Halimeda* in a Karstic System. FIU Biological Research Symposium. Miami, Florida February 2013.

Santiesteban, C., Largaespada, B., Tussenbroek B., **Collado-Vides, L.** 2013. Responses of *Avrainvillea nigricans* and *Thalassia testudinum* to Nutrient Availability. FIU Biological Research Symposium. Miami, Florida February 2013.

Schneider, S., Avila, C., Blair, S., Thyberg, T., Lirman, D., Drury, C., **Collado-Vides, L.** 2013. The detrimental effects of an *Anadyomene* bloom on seagrass beds in Biscayne Bay, Fl. FIU Biological Research Symposium. Miami, Florida. February 2013



Rojas, J., Dorcius, D., Duran, A. 2013. Defensive behavior of *Stegastes partitus* and effects on coral reef fishes. Supervised by Burkepile D. and **Collado-Vides, L.** FIU Biological Research Symposium. Miami, Florida. February 2013.

Collado-Vides, L., Avila, C., Blair, S., Thyberg, T. Schneider, S., Sweeney, P., and Lirman, D. 2013. A persistent bloom of *Anadyomene* Lamouroux species (*Anadyomenaceae*, Chlorophyta) in Biscayne Bay, Florida. Biscayne National Park Scientific Symposium. Feb 2013.

Collado-Vides, L., and Lirman, D. 2013. Macroalgae as bioindicators of nutrient status of a strongly managed region of Biscayne Bay, Florida, USA. Biscayne National Park Scientific Symposium. Feb 2013.

Collado-Vides, L., Rodriguez, D., Rojas, J. Blair, S. 2012. Morphological evidences of the identity of green macroalgae blooming species in Biscayne Bay, FL. 34th Annual Southeastern Phycological Colloquy. Jacksonville, Florida Oct 2012.

Perez, A. Puig-Santana, G., Fourqurean, J., and **Collado-Vides, L.** 2012. Evaluating Temporal Dynamics of Carbon Production for the Genus *Halimeda* in a Karstic System. 34th Annual Southeastern Phycological Colloquy. Jacksonville, Florida. Oct. 2012.

Duran, A., **Collado-Vides, L.,** and Burkepile, D. 2012. Recruitment and succession of coral reef macroalgal assemblages under different ecological factors. 34th Annual Southeastern Phycological Colloquy. Jacksonville, Florida Oct 2012.

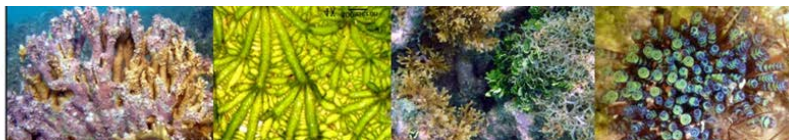
Schneider, S., Avila, C., Blair, S., Thyberg, T., Lirman, D., Drury, C., **Collado-Vides, L.** 2012. The detrimental effects of an *Anadyomene* bloom on seagrass beds in Biscayne Bay, Fl. 34th Annual Southeastern Phycological Colloquy. Jacksonville, Florida Oct 2012.

Perez, A. Puig-Santana, G., Fourqurean, J., and **Collado-Vides, L.** 2012. The Effects of Nutrient Addition on Seagrass Beds in Sub-Tropical Oligotrophic. Ecological Society of America Annual Conference. Portland, Oregon Aug 2012.

Perez, A. Puig-Santana, G., Fourqurean, J., and **Collado-Vides, L.** 2012. Nutrient Dynamics of Benthic Flora in Florida Bay: A Long-Term Approach. FIU Undergraduate Life Symposium. Miami, Florida March 2012.

Santiesteban, C., Largaespada, B., Tussenbroek B., **Collado-Vides, L.** 2012. The Potential Effects of Submarine Springs on the Submerged Aquatic Vegetation Structure of Puerto Morelos, Quintana Roo, Mexico. (Oral) FIU Undergraduate Life Symposium. Miami, Florida. March 2012.

Schneider, S., McBride, J. Avila, C., Blair, S., Anderson, W., Thyberg, T. Lirman, D. Drury, C. and **Collado-Vides, L.** 2011. Macroalgal blooms in a heavily urbanized area of South Florida. , Coastal and Estuarine Research Federation (CERF) Daytona Florida, November 2011.



Salgado, J., Schneider, S. Thyberg, T., Lirman D., and **Collado-Vides, L.** 2011. Macroalgal dynamics and nutrient content reveal trophic status in Biscayne Bay, Coastal and Estuarine Research Federation (CERF) Daytona Florida, November 2011.

Perez, A., Puig-Santana, G.A., Fourqurean, J.W., **Collado-Vides L.** 2011. Nutrient dynamics of benthic flora in Florida Bay: a long-term approach. , Coastal and Estuarine Research Federation (CERF) Daytona Florida, November 2011. Daytona Florida, November 2011.

Ladd, M. and **Collado-Vides, L.** 2011. The eutrophic status of the puerto morelos coral reef and the implications for marine protected area management. 33rd Annual Southeastern Phycological Colloquy, Miami, FL October 2011.

Broderick, E., Gabrielson, P., **Collado-Vides, L.,** Fourqurean, J. 2011. what is that pink crust? Making identification of crustose coralline algae more tractable. 33rd Annual Southeastern Phycological Colloquy, Miami, FL October 2011.

Santiesteban, C., Largaespada, B., Tussenbroek B., and **Collado-Vides, L.** 2011. Potential effects of submarine springs on the submerged aquatic vegetation structure in Puerto Morelos, Quintana Roo, México. 33rd Annual Southeastern Phycological Colloquy, Miami, FL October 2011.

Lacey E. **Collado-Vides L.** and Fourqurean, J. 2011. Influence of grazing patterns on ecosystem functioning within a eutrophic seagrass bed. 40th Annual Benthic Ecology Meeting, Mobile, Alabama. March 2011.

Ladd M. and **Collado-Vides L.** 2011. Effects of Herbivory and Nutrients on Macroalgal Cover in a Caribbean Coral Reef Environment – Characterization and Managerial Consequences. 40th Annual Benthic Ecology Meeting, Mobile, Alabama. March 2011.

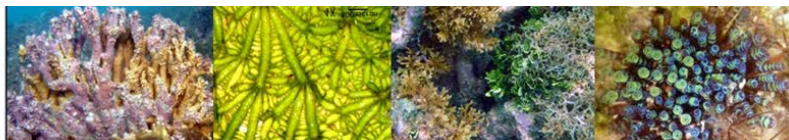
Collado-Vides, L. 2010. Macroalgal intra-specific interactions and their consequences on population production. A general overview. XX International Seaweed Symposium. February 2010. Ensenada Mexico.

Lacey, E., **Collado-Vides L.** and Fourqurean J. 2010. Size Matters! Relationships between echinoid population distribution and macroalgal community composition on a Caribbean coral reef. Benthic Ecology Meeting. March 2010.

Puig-Santana, G., Perez, A., Bello, J., Kulkarni, S., Bernard, R., Fourqurean, J., and **Collado-Vides. L.** 2010. Trends in primary production of calcareous green macroalgae along a salinity and trophic gradient in Florida Bay. LTER-FCE Meeting. March 2010 Miami, FIU.

Collado Vides L. Mazzei V. Thyberg T and Lirman D. 2010. Development of a macroalgal indicator of salinity patterns in Biscayne Bay. Greater Everglades Ecosystem Restoration. July 2010 Naples Fl.

Collado-Vides L. and Fourqurean, J. 2010 · *Halimeda* Dynamics Relative to Nutrients Availability in The Florida Keys National Marine Sanctuary: A Good Indicator of Productivity and Acidification.



Florida Keys National Marine Sanctuary. Linking Science with management. October 2010. Duck Key FL.

Lacey E., Collado-Vides L. and J. Fourqurean. 2010. Spatial nutrient dynamics of tropical marine macroalgae 32nd Annual Southeastern Phycological Colloquy, Wilmington, North Carolina, October 2010.

Perez, A., Puig-Santana, G., James W. Fourqurean and Collado-Vides L. 2010. Long term effects of nutrient enrichment on calcareous green algae in Southern Florida Bay. 32nd Annual Southeastern Phycological Colloquy, Wilmington, North Carolina, October 2010.

Mazzei, V., J. Salgado, T Thyberg, D Lirman, and Collado-Vides, L. 2009. Analysis of the macroalgal community and nutrient content variability at a managed estuary in South Florida. 31st Annual Southeastern Phycology Colloquy. October 2009 Georgia.

Lacey, E., Collado-Vides L and Fourqurean J. 2009 Size Matters! Relationships between echinoid population distribution and macroalgal community composition on a Caribbean coral reef. 31st Annual Southeastern Phycology Colloquy. October 2009 Georgia.

Bello, J., Bernard, R., Fourqurean J.W. and **Collado-Vides, L.** 2008, Comparative primary production of calcareous green macroalgae in contrasting estuarine scenarios in Florida Bay. 30th Annual Southeastern Phycological Colloquy October 24-25, 2008 St. Augustine, Florida.

Collado-Vides, L., and Piñon-Gimate A. 2008 Macroalgal distribution in a Caribbean reef system: A habitat complexity analysis. 11 International Coral Reef Symposium. Ft. Lauderdale, FL. July 2008.

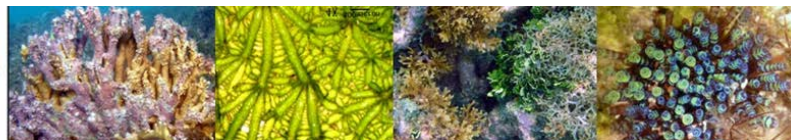
Collado-Vides, L., Rutten L. and Fourqurean, J. 2004. Variación espaciotemporal de la abundancia de las algas calcáreas verdes en los cayos de la Florida: Un estudio de sincronía dentro de un grupo funcional macroalgal. Primera Reunión nacional de la Red Mexicana de Investigación Ecológica a Largo Plazo (LTER-MEX). Oaxaca, México. October 2004.

Collado-Vides L, Rutten L. y Fourqurean, J. 2003. Spatiotemporal Distribution Of Abundance of Calcareous Green Macroalgae Along The Florida Keys: A Synchrony Study. Phycological Society of America Symposium, Oregon, USA. June 2003.

Collado-Vides, L. 2002. Modelling the initial invasion of *Caulerpa taxifolia*. A marine clonal alga 24th Southeast Phycological Colloquium. Harbor Branch, Florida, USA. Noviembre 2002.

Collado-Vides, L. and Ruesink, J. 2002. Modelo poblacional de *Caulerpa taxifolia*. Una herramienta para predecir explosiones poblacionales en especies invasoras. Congreso Latinoamericano e Iberoamericano de Ficología. Ponce, Puerto Rico 27 de Septiembre. Abstract O-54.

Collado-Vides, L. 2002. Morphological plasticity and invasive potential of some *Caulerpa* species. International *Caulerpa taxifolia* conference. San Diego California, USA.



Beltrán, M. Y., Carmona, J. and **Collado-Vides L.** 2001 Variación morfo-funcional de *Blennothrix ganeshii* Watanabe et Komárek (Oscillatoriales, Cyanoprokaryota) en Los Manantiales, Morelos. XV Congreso Mexicano de Botánica. Querétaro, Qro. México. July 2001.

Bonilla-Barbosa J. and **L. Collado-Vides** 2000. Clonal growth patterns in strictly aquatic vascular plants in Morelos, México. International workshop Clone-2000. Obergurgl (Tyrol) Austria. Abstract p.15.

Collado-Vides, L. 2000. Morphological plasticity or foraging behaviour of *caulerpa prolifera* (caulerpales-chlorophyta) in a coral reef lagoon. International workshop Clone-2000. Obergurgl (Tyrol) Austria. Abstracts p. 22.

Ávila-Ortíz A. F. Pedroche y **L. Collado-Vides.** 1999. *Padina crispata* en el Pacífico tropical Mexicano y s afinidad con *P. gymnospora*. V Congreso Latinoamericano, III Reunión Iberoamericana y VII Symposium de algas marinas Chilenas. Chile. Abstracts p.28.

Ávila-Ortíz A. F. Pedroche and **L. Collado-Vides.** 1998. Análisis fenético del género *Padina* Adanson en el Pacífico Mexicano. 7°. Congreso Latinoamericano de Botánica y XIV Congreso Mexicano de Botánica. D.F. México. Abstract p.161.

Collado-Vides L. 1997. Phycological aspects of the mexican mangroves. Simposio Ecosistemas Acuáticos de México. México. 1997.

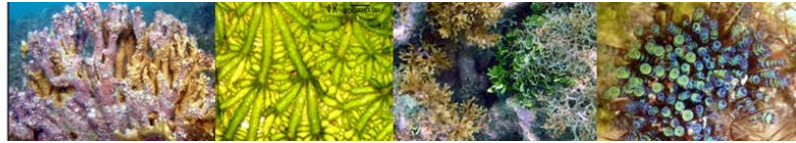
Rodríguez-Almazán C., **Collado-Vides, L.** and Tussenbroeck B. 1997. Dinámica de los manchones de *Lobophora variegata* (Lamouroux) Womersley, (Forma plegada), en la laguna arrecifal de Puerto Morelos, Quintana Roo, México. IV Congreso de Ciencias del Mar, La Habana Cuba. July 1997.

Avila-Ortiz A. and **L. Collado-Vides.** 1996. Reconocimiento del talo gametofito masculino de *Padina durvillaei* Bory (Dictyotales, Phaeophyta) en el Pacífico tropical mexicano. II Congreso Mexicano de Ficología, Ensenada B.C. 1996.

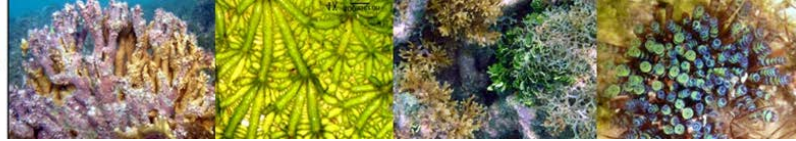
Rivas-Lechuga G., Rodríguez D., **Collado-Vides L.** and Gomez G. 1996. Simulación de la arquitectura apical en *Gelidium* L. (Gelidiales, Rhodophyta) con sistemas Lindenmayer Bidimensionales. IV Congreso Latinoamericano de Ficología, Brasil. Summer 1996.

Avila-Ortiz A. and **L. Collado-Vides.** 1996. Estado del conocimiento actual del género *Padina* Adanson (Dictyotales, Phaeophyta) en el Pacífico tropical mexicano. IV Congreso Latinoamericano de Ficología, Brasil. Summer 1996.

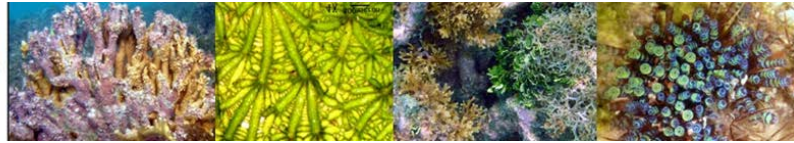
Collado-Vides L., G. Rivas-Lechuga, L. Martinell and G. Gómez. 1996. Comparación de dos estrategias invasivas utilizando sistemas Lindenmayer en *Caulerpa cupressoides* (Caulerpales-Chlorophyta) en el sistema arrecifal de Puerto Morelos, México. IV Congreso Latinoamericano de Ficología, Brasil. Summer 1996.



- Comba L., **L. Collado-Vides**, I. Ortegón-Aznar and J. González-González. 1996. Estudio florístico de algunas localidades del estado de Quintana Roo, México. IV Congreso Latinoamericano de Ficología, Brasil. August 1996.
- Collado-Vides L.**, L. Martinell and D. Robledo. 1996. Estrategias invasivas contrastantes en varias algas estoloníferas en dos habitats diferentes. 8^{vo} Simposium Internacional Sobre Arrecifes de Coral. Panamá. 1996.
- Collado-Vides L.**, A. Suárez, L. Comba and J. González-González. 1996. El género *Udotea* (Bryopsidales, Chlorophyta) en el Caribe Cubano y Mexicano. 8^{vo} Simposium Internacional Sobre Arrecifes de Coral. Panamá. 1996.
- Collado-Vides L.** 1995. Attended The Evolution of Plant Architecture (Discussion symposium) Linnean Society, London. 1995.
- Collado-Vides L.**, G. Gómez, G.Rivas and V. Gómez. 1995. Growth simulation of *Bostrychia radicans* (Ceramiales-Rhodophyta) using L-Systems. Annual Meeting of the Society for Mathematical biology. Huastepc, México. 1995.
- Rodríguez, V.D. and **L. Collado-Vides**. 1995. Modelo arquitectónico para los patrones de crecimiento apical de *Gelidium* L. (Gelidiales, Rhodophyta). XIII Congreso Mexicano de Botánica. 1995.
- Martinell, B. L. and **L. Collado-Vides**. 1995. Arquitectura de Dictyota dichotoma. XIII Congreso Mexicano de Botánica. 1995.
- Comba-Barrera L., I. Ortegón A., C. Rodríguez A., J. González-González and **L. Collado-Vides**. 1995. Caracterización general preliminar de las formas algales del arrecife de Puerto Morelos. XIII Congreso Mexicano de Botánica. 1995.
- Comba-Barrera L. and **L. Collado-Vides**. 1995. El género Udotea en el arrecife de Puerto Morelos y zonas aledañas. XIII Congreso Mexicano de Botánica. 1995.
- Avila-Ortiz A. and **L. Collado-Vides**. 1995. Estado del conocimiento actual del género Padina Adanson (Dictyotales, Phaeophyta) en el Pacífico tropical mexicano. XIII Congreso Mexicano de Botánica . 1995.
- Collado-Vides L.**, G. Gómez, G.Rivas and V. Gómez. 1995. Simulation of clonal growth of *Bostrychia radicans* (Mont) Mont. (Rhodomelaceae, Rhodophyta) using L-Systems. XV International Seaweed Symposium. Chile. 1995.
- Senties, G.A., D. Rodríguez and **L. Collado-Vides**. 1995. *Laurencia* Lamouroux (Ceramiales-Rhodophyta) in the Mexican Caribbean Sea. State of art. XV International Seaweed Symposium. Chile. 1995.
- Collado-Vides L.** and J. González-González. 1994. Macroalgas del Sistema Lagunar de Nichupté, Quintana Roo, México. III Congreso de Ciencias del Mar. Habana Cuba. 1994.



- Collado-Vides L.**, J. González-González, M. Cordeiro-Marino and E. Ezcurra. 1994. Architectural characterization of the algae of a tropical coastal lagoon. VI Phycological Congress Qingdao CHINA.. Poster presented, but not attended. 1994
- Collado-Vides L.** and Braga M.R.A. 1993. Ecología: Perspectivas y discusión. Tendencias actuales en ecología de algas marinas. III Congreso Latinoamericano de Ficología, D.F. México. July 1993.
- Collado-Vides L.**, Braga M.R.A and Cordeiro-Marino M. 1993. Aspectos arquitectónicos de dos especies clonales de algas en manglares. III Congreso Latinoamericano de Ficología, D.F. México. July 1993.
- Collado-Vides L.**, Cordeiro-Marino M. and Ezcurra E. 1993. La arquitectura vegetal aplicada al estudio de las algas marinas. III Congreso Latinoamericano de Ficología, D.F. México. July 1993.
- Fujii M., **Collado-Vides L.** and Cordeiro-Marino M. 1993. Estudios morfológicos de *Laurencia gemmifera* Harvey e *L. poitei* (Lamouroux) Howe do Sistema Lagunar de Nichupté, Quintana Roo, México. III Congreso Latinoamericano de Ficología, D.F. México. July 1993.
- Collado-Vides L.** 1993. Aspectos ficoflorísticos de los manglares de México. Ponencia invitada en la mesa redonda "Ecología de manglares", durante el III Congreso Latinoamericano de Ficología, D.F. México. 1993.
- Collado-Vides L.** and M. Cordeiro-Marino. 1993. Construcción de modelos arquitectónicos en algas marinas. XII Congreso Mexicano de Botánica, Yucatán, Mérida, México. 1993.
- Collado-Vides L.**, J. González-González and E. Ezcurra. 1992. Análisis ficoflorístico del Sistema Lagunar de Nichupté, Quintana Roo, México. XLIII Congreso Nacional de Botánica, Aracajú, Brasil. 1992.
- Collado-Vides L.** and J. González-González. 1991. Some observations on algae associated to mangroves in Nichupté Lagoon System a Mexican Caribbean coastal lagoon. Fourth International Phycological Congress, North Carolina U.S.A. 1991.
- Serviere-Zaragoza E. and **Collado-Vides L.** 1990. Algunas observaciones sobre la flora ficológica de la laguna de Bojórquez, Cancún. V Congreso Latinoamericano de Botánica, Habana Cuba. 1990.
- Collado-Vides L.**, J. González-González, and M. Gold Morgan. 1990. Estudio taxonómico-ecológico de la forma de crecimiento masa flotante de algas de la laguna de Bojórquez, Cancún, México. Congreso de Ciencias del Mar, Habana Cuba. 1990.
- González-González J., **Collado-Vides L.** and Gold-Morgan M. 1990. Las masas de algas filamentosas como una forma de crecimiento de la Laguna de Bojórquez, México. Congreso Latinoamericano de Ficología Marina Lima, Perú. 1990.



Collado-Vides L. 1989. Estudio florístico-ecológico de las algas flotantes de la Laguna de Bojórquez, Cancún.- II Encuentro Académico de Estudiantes del Posgrado en Ciencias del Mar, U.N.A.M. D.F., México.

Collado-Vides L., L. Segura, and M. Merino. 1987. Observaciones de dos escifomedusas del género *Cassiopea*, durante un ciclo anual en la laguna de Bojórquez. Congreso Internacional de Ciencias del Mar, Habana Cuba. 1987.

OTHER SCHOLARLY AND CREATIVE WORK

Mentoring and advising students

Doctoral Dissertation Major Advisor

Avila Ortiz, A. The genus *Padina* in the Tropical Mexican Pacific. Student: Universidad Nacional Autónoma de México Graduated 2001.

Graciela de Lara Isassi An evaluation of the Mexican marine macroalgae as a potential resources in their antibiotic activities. Universidad Nacional Autónoma de México Graduated 1997.

Doctoral Dissertation Co/Major Advisor

Duran, A. Macroalgae succession in coral reefs. Florida International University. Department of Biology. Major Advisor Dr. D. Burkepile. 2013-in progress.

Lacey, E. Herbivores keystone species and resilience of coral reefs. A case study in the Mexican Caribbean. Florida International University. Department of Biology. Major Advisor Dr. J. Fourqurean. Graduated 2012.

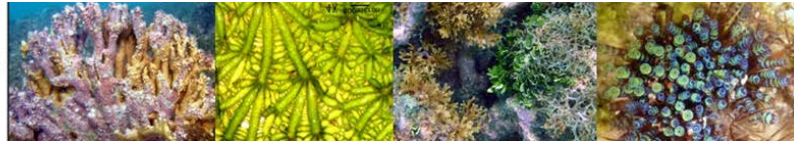
Masters Thesis Major Advisor

Duran, A. Herbivory by reef fish and nutrient availability as top-down and bottom-up ecological factors on coral reef macroalgae community structure. Florida International University. Department of Biology. Graduated 2013.

Ladd, M. Impact of management strategies on coral reef health and its consequences on local communities in the Puerto Morelos Marine Protected Area. Florida International University. Department of Earth and Environment. Graduated 2011. Earned the College of Arts and Sciences and Department of Earth and Environment Outstanding Thesis Award.

Honors Thesis Advisor

Rodríguez Almazán C. Dynamics of *Lobophora variegata* Lamouroux growth in the Puerto Morelos Reef, Quintana Roo. Facultad de Ciencias. Universidad Nacional Autónoma de México. Graduated 1997.



Piñon Gimate A. Study of the algal community of the Puerto Morelos reef system, Quintana Roo, México. Facultad de Ciencias. Universidad Nacional Autónoma de México. Graduated 1997.

García Pérez M. E. Phycofloristic study of the Chankanaab marine park Quintana Roo México. Facultad de Ciencias. Universidad Autónoma del Estado de Morelos. Graduated 1997.

Comba Barrera L. Morpho-anatomic study of the genus *Udotea* (Lamouroux) in some localities of the Mexican Caribbean and north platform of Cuba. Facultad de Ciencias. Universidad Nacional Autónoma de México Graduated 1996.

Member of Doctoral Dissertation and Masters Thesis Committees

Doctoral

Ladd, M. Restoration of coral reefs. Department of Biology. Florida International University. Department of Biology. 2012-in process.

Broderick, E. A study on calcareous coralline algae, a key species in the recovery of coral reefs. Florida International University. Department of Biology. Dropped 2010-2012.

Stoner, E. How benthic jellyfish can affect community structure and ecosystem function in seagrass ecosystems. . Florida International University. Department of Biology. 2008-in process.

Ponce, E. Genetic inter and intra population variability in species of *Gelidium* (Gelidiales, Rhodophyta) of the Mexican Tropical Pacific (PTM).” Posgrado de Ciencias del Mar y Limnología, Universidad Nacional Autónoma de México. Graduated 2010.

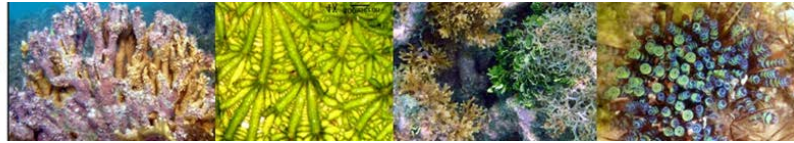
Yñiguez, A. Spatial dynamics in the growth and spread of *Halimeda* and *Dictyota* in the Florida Keys: a simulation modeling approach. RSMAS University of Miami. Graduated 2007.

Monro, K. Evolutionary consequences of growth-form plasticity in a red seaweed. University of New South Wales, Australia. Graduated 2007.

Sentías Granados, A. Taxonomy of the genus *Laurencia* (Rhodomelace, Rhodophyta) in the Mexican Caribbean Sea. Facultad de Ciencias. Universidad Nacional Autónoma de México. Graduated 1999.

Carmona Jiménez, J. Floristic study (Taxonomy, Ecology and Biogeography) of the Rhodophyta of fresh water in the central region of Mexico. Facultad de Ciencias, Universidad Nacional Autónoma de México. Graduated 1997.

Rodríguez Murillo, M.E. Ciliates associated to the submerged vegetation and mangrove roots of the Tamiahua, lagoon Veracruz, México. Facultad de Ciencias, Universidad Nacional Autónoma de México. Graduated 1997.



Meave Del Castillo, M.E. Taxonomy and distribution of the Cladophorales (Chlorophyta) in the region of the Huasteca Potosina. Facultad de Ciencias, Universidad Nacional Autónoma de México. Graduated 1997.

León, D. Crustose Phaeophyta of the Tropical Mexican Pacific. Facultad de Ciencias, Universidad Nacional Autónoma de México. Graduated 1996.

Padilla Souza, A.C. Demography and population dynamics of *Acropora palmata* in Quintana Roo, Mexico. Facultad de Ciencias, Universidad Nacional Autónoma de México. Graduated 1996.

León Tejera, H.P. Phycofloristic characterization of the south limit of the Mexican tropical Pacific. Facultad de Ciencias, Universidad Nacional Autónoma de México. Graduated 1995.

Gallegos M. Population dynamics and growth of the Caribbean seagrasses *Thalassia testudinum* Banks ex König, *Syringodium filiforme* Kuetz. and *Halodule wrightii* Ascherson. Facultad de Ciencias, Universidad Nacional Autónoma de México. Graduated 1995.

Altessor, A. Architectural models in Cactacea. Institute of Ecology, Universidad Nacional Autónoma de México. 1995.

Masters

Bohorquez, C. Morphological and genetic analysis of the green alga *Caulerpa taxifolia* (Vahl) C. Agardh (Bryopsidales) in New South Wales. University of New Castle. 2012-in process.

Ussa, M. Evaluating the effects of sea level rise on sea turtle nesting sites: a case study of the Archie Carr national wildlife refuge. Florida International University, Department of Earth and Environment. Graduated, 2013.

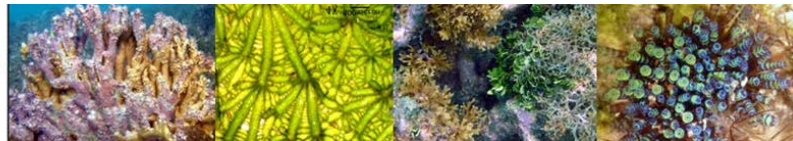
Pierce, B. Perceptions and Preferences of Commercial Fishers in the Florida Keys for Alternative Management Frameworks. Department of Environmental Studies. Florida International University. Graduated 2012.

Da Costa, D. An economic valuation of Buccoo Reef Marine Park, Tobago W.I. Florida International University Department of Environmental Studies. Graduated 2010.

Reid, K. Marine Protected Areas in Jamaica. Department of Environmental Studies. Florida International University. Graduated 2005.

Ortegón Aznar, I. Integrative phycofloristic study of three coastal lagoons of the Yucatan Peninsula. Facultad de Ciencias. Universidad Nacional Autónoma de México. Graduated 1996.

Cantoral Uriza, A.E. Phycology of the algal communities in the hydrological basin El Salto in the Huasteca Potosina. Facultad de Ciencias. Universidad Nacional Autónoma de México. Graduated 1994.



Sentías Granados, A. Taxonomic evaluation of the genus *Polysiphonia* Greville (Ceramiales, Rhodophyta) in the Tropical Mexican Pacific. Facultad de Ciencias. Universidad Nacional Autónoma de México. Graduated 1993.

Grants and awards

PI An evaluation of the sediment nutrient status on the *Anadyomene* complex bloom in Biscayne Bay. Contract A79369 Department of Environmental Protection Biscayne Aquatic Preserves. Amount: \$3,700.00, year 2013

Support from LACC-FIU to attend the Association of Marine Laboratories of the Caribbean, Jamaica Scientific meeting. Amount \$400.00, year 2013.

PI An evaluation of the expansion of the *Anadyomene* complex bloom in Biscayne Bay. A study of their nutrient and stable isotope content. Contract A57A9E Department of Environmental Protection Biscayne Aquatic Preserves. Amount \$6,000.00, year 2012

PI Effects of Nutrient Regimes on Coastal Seagrass-macroalgal Communities A case study in a Marine Protected Area in the Mexican Caribbean Coral Reef System. FIU Global Learning Initiative. Amount \$5,000.00, year 2012

Florida Coastal Everglades, LTER REU position for Alex Perez. With Project ID 205001595. Award amount \$6,132.00, year 2011-2012.

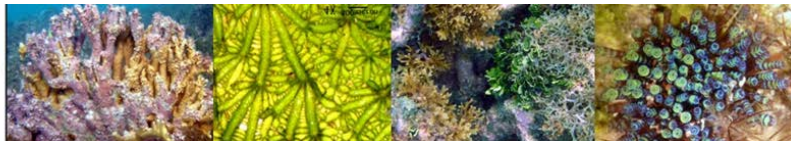
PI Macroalgae as indicators of nutrient conditions in Biscayne Bay: A study of nutrient and stable isotope content on the green macroalgae complex *Anadyomene stellata* – *A. pavonina*. Contract Department of Environmental Protection Biscayne Aquatic Preserves. . Amount \$5, 489.80, year 2011.

LACC-FIU support to travel to the Mexican Caribbean to do research and present results to Marine National Parks Managers. Amount \$1,000.00 year 2011.

PI Biscayne Bay's Nearshore Habitats: Linking Seasonal Patterns in Benthic Community Structure with Salinity and Temperature. Subcontract with University of Miami, with Project ID 800000691. Amount \$28,130.00, years 2010-2012.

PI Biscayne Bay's Nearshore Habitats: Linking Seasonal Patterns in Benthic Community Structure with Salinity and Temperature. Subcontract with University of Miami, with Project ID 800000520. Amount \$10,638.00, years 2010-2011.

PI of the project Biscayne Bay's Nearshore habitats: Linking seasonal patterns in benthic community structure with salinity and temperature. Subcontract with University of Miami, with Project ID 205002545. Award amount \$9,584.29, year 2009.



OFFICES HELD IN PROFESSIONAL SOCIETIES

Secretary of the Association of Marine Laboratories of the Caribbean June 2013 to date.

Executive Member of the Sociedad Ficológica de Latinoamérica y el Caribe (Phycological Society of Latin America and Caribbean), February 2013-2015.

Member at large of the Association of Marine Laboratories of the Caribbean 2009-2010.

Founding member of the Phycological Society of Latin America and Caribbean 1993.

UNIVERSITY AND PROFESSIONAL SERVICE

General overview

I participate in different educational activities at the university, college and departmental levels such as the Department Education Committee or education group discussions and workshops. I participate in Commencement ceremonies.

I have served as Chair for an Instructor Position Search Committee and on several Tenure-track Position Search Committees.

I regularly participate in many department events such as Faculty meetings, Department seminars, and retreats.

University, college and department service

2014-2016

Graduate Committee Latin American and Caribbean Center

Department

2012-2013

Chair of the General Biology Instructor Search Committee

Member of the Undergraduate Education Committee

2011-2012

Member of the Undergraduate Education Committee

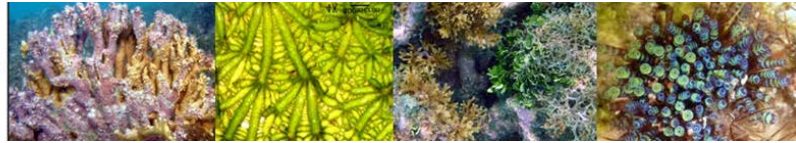
Member of the Instructor Positions Search Committee

Member of the Ecosystems Ecologist Position Search Committee

Member of the Cuervo Award Committee

2010-2011

Member of the Undergraduate Education Committee



Member of the Lecturer Position Search Committee
Member of the Cuervo Award Committee

2009-2010

Member of the Undergraduate Education Committee
Member of the Cuervo Award Committee

2008-2009

Member of the Undergraduate Education Committee
Ad-hoc QEP- Faculty Learning Committee

University/College

2012-2013

Global Learning Participation during the presentations of the Global Learning Faculty Fellowships

2011-2012

Member of interview panel for Pre-Med students
Judge for Graduate Scholarly Forum March 2011
Participate in the Global Learning workshops

2010-2011

Member of interview panel for Pre-Med students, judge for Graduate Scholarly Forum March 2011
Participate in the Global Learning workshops

2009 and 2010.

Reviewer for LACC evaluating IRG FIU-UM proposals.
QEP- Faculty Learning Committee

2008-2009

QEP- Faculty Learning Committee

Professional Service

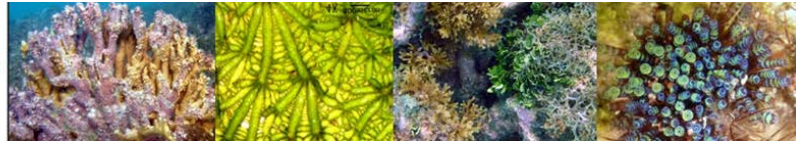
General overview

I serve as peer review for several scientific journals of my discipline, as well as reviewer for grant proposals.

I serve as student presentations evaluator at scientific meetings.

I present public talks on my discipline and participate in local events that promote scientific knowledge of our marine ecosystems.

I work with local artists to bring science and art to the public and bring awareness of the beautiful world of seaweeds.



Reviewer for Scientific Journals

I serve as reviewer for several Scientific Journals with an average of 6 manuscript reviews per year. I have to limit my service in order to balance my own productivity and other service activities.

Journals served:

Ciencias Marinas
Caribbean Journal of Sciences
Hidrobiológica
Botanica Marina
Aquatic ecosystems Health & Management Canada
Journal of Phycology,
Marine Biology, JMBA
Phycologia ISP
Interciencia (Venezuela)
Bulletin of Marine Sciences
Journal of Experimental Marine Biology and Ecology
Marine Ecology Progress Series
Journal of Applied Phycology
Journal of Phycology
Revista de Biología Tropical
Bulletin of Marine Biology
Oikos
Planta
Marine Pollution Bulletin
Aquatic Botany
Biological Invasions

Grant Reviewer for the following agencies

Florida Seagrant Program

Harmful Algal Bloom Program from NOAA

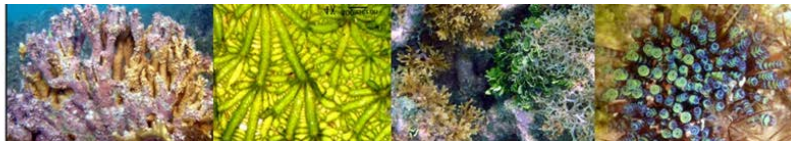
NOAA Undersea Research Center at the University of North Carolina Wilmington

Comisión Nacional de Ciencia y Tecnología México (CONACyT)

Universidad Autónoma de Metropolitana, México, Grant Program

Dirección General de Asuntos del Personal Académico Universidad Nacional Autónoma de México
Grant Office.

SEMARNAT- Mexican Government.



Comisión Nacional de Ciencia y Tecnología Chile, (CONyCET)

Scientific meetings and Workshop organizer

Laurencia complex workshop at the mid-congress workshops day at the International Phycological Congress in Orlando August 2013. Conveners Dr. Ligia Collado-Vides (FIU-USA) and Dr. Mutue Toyota Fujii (Botanical Garden, Brazil).

Laurencia complex workshop- field trip extension. August 2013 a three day scientific field and laboratory work. Organizer Dr. Ligia Collado-Vides with the support of the Fairchild Tropical Botanical Garden, The Biscayne Bay Aquatic Preserves, and the Deering Estate Park.

Organizer of the 33rd Annual Southeast Phycological Colloquy. Miami, FIU- October 2011. This meeting reunites all the phycologists of the Southeast region of the US. This was the first time we had this meeting in Miami bringing FIU into the map of phycologists in US.

Chair of the Mini-symposium on Population Ecology of Seaweed at the XX International Seaweed Symposium. Conveners Dr. Ligia Collado-Vides (FIU-USA) and Dr. Bernabe Santelices (Univerisdad Catolica de Chile, Chile). 2009 Ensenada, Mexico.

Lecture to general public

Macroalgae: Hidden Colors and dancers of the Sea. Talk to general public on the Ocean Life Series. Deering Estate. Enriched with exhibition of paints of the Tropical Fairchild Botanic Artists. March 2014.

Sensational Seaweeds. Talk to general public at Deering Estate Nature Center during Bayanza March 2013 festival.

Macroalgae: Hidden Colors of the Sea. Talk to general public on the Ocean Life Series, SEAS-FIU. Murray E. Nelson Government and Cultural Center, Key Largo, 2012. Enriched with exhibition of paints of the Tropical Fairchild Botanic Artists.

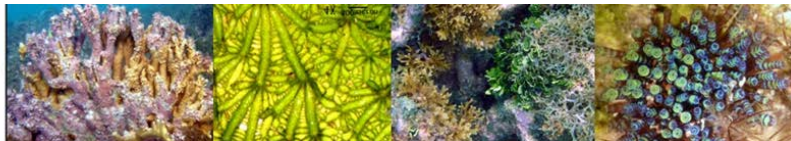
Public awareness

I organized a successful participation of my lab members at the Seafood Festival that took place in Deering Estate Park. Our day participation included research and education and bringing awareness of macroalgae role in coastal waters. March 2012, and March 2013.

Seaweed specialist participation in the **Macroalgae awareness day** at the Biscayne Bay Aquatic Preserves snorkel day during Bayanza Festival, March 2013.

Organizer of the art exhibition: **Marine Macroalgae: Hidden Colors of the Sea.** May 6, 2012. The Tropical Fairchild Botanic Artists produced a collection based on herbarium material and exhibit at the BBC library. Several paints were donated to the library and are now permanently exhibited at the BBC library.

I participated in two radio interviews on Spanish radio stations related to the BP oil spill event. 2010.



I organized a successful participation of my lab in the **Bioblitz** event that took place in Biscayne Bay. Our two day participation included research and education. Inventory and public awareness event organized by: The National Geographic and the Biscayne Bay National Park.

COURSES TAUGHT AT FIU:

Undergraduate

BSC 1011 General Biology II

OCB 3264 Coral Reef Biology

OCB 3043 Marine Biology and Oceanography (Lecture and Lab)

PCB 3043 Ecology

PCB 3043 L Ecology Lab

PCB 4476C Marine Reserves (Lecture and Lab)

BOT 4402C Marine Botany (Lecture and Lab)

BSC 4931 Senior Seminar

Graduate

PCB 5418C Advanced Marine Reserves (Lecture and Lab)

BOT 5186 Advanced Marine Botany (Lecture and Lab)

Mentoring

Undergraduate independent studies

BSC 3915 Student Research Lab (Direct Individual Study)

BSC 4914 Student Research Lab (Direct Individual Study)

EVR 4905 Student Research Lab (Direct Individual Study)

EVR 4905 Student Research Lab (Direct Individual Study)

Graduate

Master Thesis

BSC 6971 Master Thesis

BSC 6913 Student Research Lab (Direct Individual Study)

Courses taught per semester

Spring 2014

OCB 3264 Coral Reef Biology (Transforming course with HHMI support)

BSC 1011 General Biology II

BSC 4931 Senior Seminar

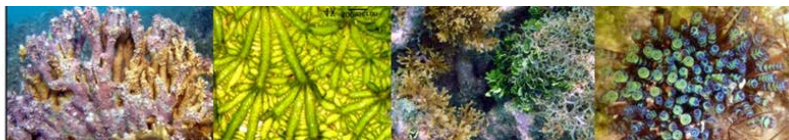
BSC 4914 Student Research Lab (Direct Individual Study)

BSC 6913 Student Research Lab (Direct Individual Study)

EVR 4905 Student Research Lab (Direct Individual Study)



**MARINE
MACROALGAE
RESEARCH LAB**
Florida
International
University



Fall 2013

OCB 3264 Coral Reef Biology (Transforming course with HHMI support)

PCB 4476C Marine Reserves (Lecture and Lab)

PCB 5418C Advanced Marine Reserves (Lecture and Lab)

Summer 2013

BSC 6913 Student Research Lab (Direct Individual Study)

Spring 2013

OCB 3264 Coral Reef Biology

PCB 4476C Marine Reserves (Lecture and Lab)

PCB 5418C Advanced Marine Reserves (Lecture and Lab)

BSC 6971 Master Thesis

BSC 6913 Student Research Lab (Direct Individual Study)

EVR 4905 Student Research Lab (Direct Individual Study)

Fall 2012

BOT 4402C Marine Botany (Lecture and Lab)

BOT 5186 Advanced Marine Botany (Lecture and Lab)

BSC 1011 General Biology II

BSC 6913 Student Research Lab (Direct Individual Study)

Summer 2012

BSC 6913 Student Research Lab (Direct Individual Study)

Spring 2012

OCB 3264 Coral Reef Biology

PCB 4476C Marine Reserves (Lecture and Lab)

PCB 5418C Advanced Marine Reserves (Lecture and Lab)

BSC 4914 Student Research Lab (Direct Individual Study)

Fall 2011

BOT 4402C Marine Botany (Lecture and Lab)

BOT 5186 Advanced Marine Botany (Lecture and Lab)

BSC 1011 General Biology II

EVR 6971 Master Thesis

BSC 4914 Student Research Lab (Direct Individual Study)

BSC 3915 Student Research Lab (Direct Individual Study)

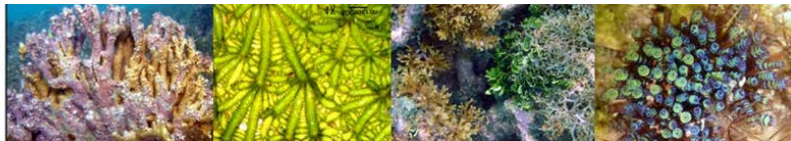
Summer 2011

EVR 4905 Student Research Lab (Direct Individual Study)

Spring 2011

OCB 3264 Coral Reef Biology

PCB 4476C Marine Reserves (Lecture and Lab) Transformed to Global Learning Course



PCB 5418C Advanced Marine Reserves (Lecture and Lab) Transformed to Global Learning Course
EVR 6971 Master Thesis
BSC 4914 Student Research Lab (Direct Individual Study)
BSC 3915 Student Research Lab (Direct Individual Study)

Fall 2010

BOT 4402C Marine Botany (Lecture and Lab)
BSC 1011 General Biology II
EVR 6971 Master Thesis
EVR 6970 Student Research Lab (Direct Individual Study)
BSC 4914 Student Research Lab (Direct Individual Study)
BSC 3915 Student Research Lab (Direct Individual Study)

Spring 2010

OCB 3264 Coral Reef Biology
PCB 4476C Marine Reserves (Lecture and Lab), offered as a new course
PCB 5418C Advanced Marine Reserves (Lecture and Lab), offered as a new course
BSC 6913 Student Research Lab (Direct Individual Study)
BSC 4914 Student Research Lab (Direct Individual Study)
BSC 3915 Student Research Lab (Direct Individual Study)

Fall 2009

BOT 4402C Marine Botany (Lecture and Lab)
BSC 1011 General Biology II
BSC 4914 Student Research Lab (Direct Individual Study)

Summer 2009

BSC 3915 Student Research Lab (Direct Individual Study)

Spring 2009

PCB 3043 Ecology
PCB 3043 L Ecology Lab
BSC 1011 General Biology II
BSC 4914 Student Research Lab (Direct Individual Study)

Fall 2008

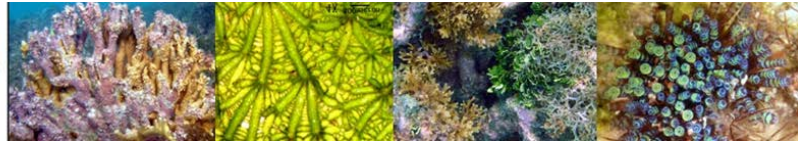
BOT 4402C Marine Botany (Lecture and Lab)
BOT 5186 Advanced Marine Botany (Lecture and Lab)
BSC 1011 General Biology II
BSC 3915 Student Research Lab (Direct Individual Study)

Summer 2008

BSC (EASB) Topics in Biology (Marine reserves Taught in Mexico)
BSC 3915 Student Research Lab (Direct Individual Study)



**MARINE
MACROALGAE
RESEARCH LAB**
Florida
International
University



Spring 2008

OCB-3043 Marine Biology and Oceanography

OCB-3043L Marine Biology and Oceanography Laboratory